



CN565S3-ST

Super-Sider Coil Nailer



OPERATING & MAINTENANCE MANUAL

BEFORE USING THIS TOOL, STUDY THIS MANUAL TO ENSURE SAFETY WARNING AND INSTRUCTIONS.



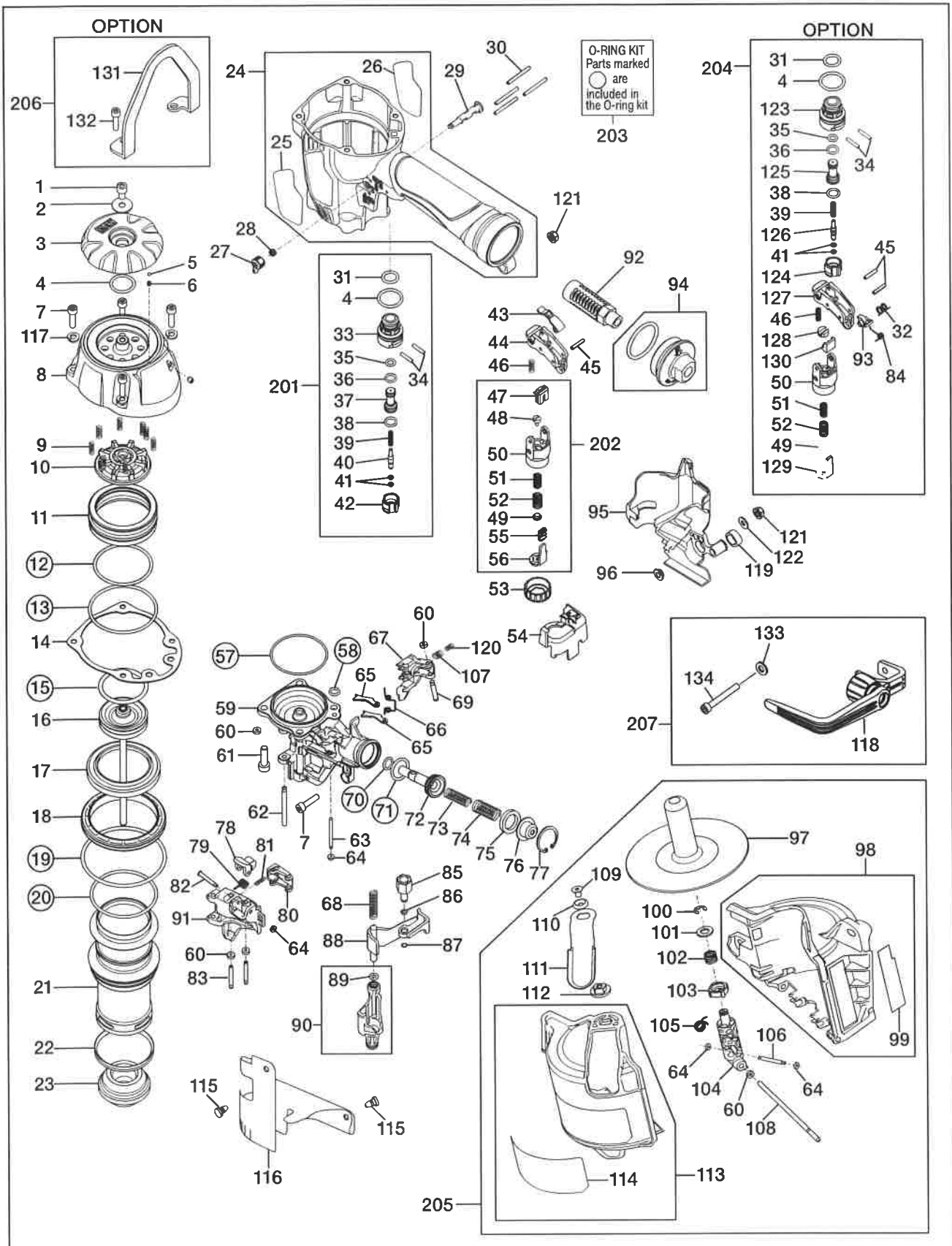
KEEP THESE INSTRUCTIONS WITH THE TOOL FOR FUTURE REFERENCE.

WARNING

JUNE 2018

CN565S3-ST

EXPLODED VIEW
AND SPARE PARTS LIST



Parts List of MAX CN565S3-ST Super Sider

| Part No | Part Code | Description | Part No | Part Code | Description | Part No | Part Code | Description |
|---------|-----------|----------------------------------|---------|-----------|------------------------------|---------|-----------|---------------------------|
| 1 | CN38235 | HEX SOC. HD. CAP SCREW M6X10 MEC | 60 | EE39602 | WASHER 7 | 119 | CN38271 | CONTACT TOP |
| 2 | CN38236 | PLAIN WASHER 6.5X20X1 | 61 | BB40413 | SOC.HD.CAP SCREW 6X22 N5530 | 120 | CN38309 | COMPRESSION SPRING 8309 |
| 3 | CN38237 | EXHAUST COVER | 62 | CN38246 | STRAIGHT PIN 8246 | 121 | CN38310 | HEX. NUT WITH FLANGE M5 |
| 4 | KN12644 | O-RING 1AP20 | 63 | CN38297 | STRAIGHT PIN 8297 | 122 | KN12619 | PLANE WASHER 5.1X12X1.2 |
| 5 | CN38141 | STEEL BALL 3 | 64 | EE39609 | RUBBER WASHER 1.8X6X2 | 123 | CN31323 | TRIGGER VALVE HOUSING |
| 6 | CN38292 | COMPRESSION SPRING 8292 | 65 | CN38296 | CHECK PAWL | 124 | CN31346 | TRIGGER VALVE CAP |
| 7 | BB40401 | BOLT 5 X 22 | 66 | CN38298 | TORSION COIL SPRING 8298 | 125 | CN33627 | PILOT VALVE |
| 8 | CN81290 | CYLINDER CAP UNIT | 67 | CN38247 | FEED PAWL | 126 | CN33723 | TRIGGER VALVE STEM |
| 9 | CN38241 | COMPRESSION SPRING 8241 | 68 | CN38276 | COMPRESSION SPRING 8276 | 127 | CN35648 | TRIGGER |
| 10 | CN38243 | PISTON STOP | 69 | CN38286 | STEP PIN 8286 | 128 | CN38299 | ARMGUIDE PIN |
| 11 | CN38242 | HEAD VALVE PISTON | 70 | KN12641 | O-RING 1AP9 | 129 | CN38300 | CONTACT ARM A(ST) |
| 12 | CN38284 | O-RING AS568-136 | 71 | CN38000 | O-RING 1A P18 | 130 | CN38301 | CONTACT ARM A GUIDE |
| 13 | KN12645 | O-RING AS568-142 | 72 | CN38248 | FEED PISTON | 131 | CN38312 | BODY HANGER |
| 14 | CN38269 | CYLINDER CAP SEAL | 73 | CN38308 | COMPRESSION SPRING 8308 | 132 | BB40405 | BOLT 5X25 |
| 15 | CN38226 | O-RING 1BP40 | 74 | CN38016 | COMPRESSION SPRING 8016 | 133 | EE39172 | WASHER 5.1X12X1.2 |
| 16 | CN81266 | MAIN PISTON UNIT | 75 | CN37998 | FEED PISTON STOP | 134 | BB40492 | T-BOLT 5X42 |
| 17 | CN38234 | CYLINDER SEAL | 76 | CN37995 | SPRING COLLAR | 201 | CN81287 | TRIGGER VALVE KIT CN565S2 |
| 18 | CN38233 | CYLINDER RING CN565S2 | 77 | CN38012 | C-RETAINING RING 24 | 202 | CN81315 | ARM GUIDE KIT CN565S2 |
| 19 | CN38005 | O-RING 1AG75 | 78 | HN11405 | DOOR LATCH | 203 | CN81286 | O-RING KIT CN565S2 |
| 20 | CN38281 | O-RING AS568-141 | 79 | CN38127 | TORSION SPRING 8127 | 204 | CN81289 | ST KIT CN565S2 |
| 21 | CN38232 | CYLINDER | 80 | CN38294 | RATCHET A | 205 | CN81321 | MAGAZINE ASSY USA |
| 22 | CN37991 | CHECK VALVE | 81 | CN38295 | COMPRESSION SPRING 8295 | 206 | CN81300 | BODY HANGER KIT CN565S2 |
| 23 | CN38272 | BUMPER | 82 | FF41599 | PIN 1599 (REPLACES FF41587) | 207 | CN81301 | HOOK KIT(CN565S2) |
| 24 | CN81294 | BODY ASSY | 83 | CN38250 | STRAIGHT PIN 8250 | | | |
| 25 | CN38230 | NAME PLATE A | 84 | KK33247 | SPRING 3247 | | | |
| 26 | CN38231 | NAME PLATE B | 85 | CN38260 | CONTACT BOLT | | | |
| 27 | KN12621 | TRIGGER LOCK DIAL | 86 | CN37992 | O-RING A1.2X4 | | | |
| 28 | KK23507 | SPRING 3507 | 87 | CN38289 | ADJUST STOPPER | | | |
| 29 | KN12622 | TRIGGER LOCK LEVER | 88 | CN81272 | CONTACT ARM B UNIT | | | |
| 30 | FF21235 | SPRING PIN 3X30 | 89 | CN38282 | O-RING 1B P5 | | | |
| 31 | KN12643 | O-RING 1AP12 | 90 | CN81298 | CONTACT NOSE ASSY (AFTER) | | | |
| 32 | KK33144 | TORSION SPRING 3144 | 91 | CN38249 | DOOR | | | |
| 33 | CN33909 | TRIGGER VALVE HOUSING | 92 | CN38285 | END CAP FILTER | | | |
| 34 | KN12660 | STRAIGHT PIN 2660 | 93 | TA16138 | S.T. LEVER | | | |
| 35 | KN12642 | O-RING 1AP6 | 94 | CN81224 | END CAP ASSY | | | |
| 36 | HH11209 | O-RING 1BP7 N10028 | 95 | CN38273 | ARM COVER | | | |
| 37 | CN33627 | PILOT VALVE | 96 | CN38302 | COLLAR | | | |
| 38 | KN12641 | O-RING 1AP9 | 97 | CN38159 | NAIL SUPPORT | | | |
| 39 | KK24123 | COMPRESSION SPRING 4123 | 98 | CN81292 | MAGAZINE (AFTER) | | | |
| 40 | CN35128 | TRIGGER VALVE STEM | 99 | CN38293 | NAILSUPPORT SWITCH LABEL | | | |
| 41 | KN12647 | O-RING 1B 1.4X2.5 | 100 | CN38165 | E-RETAINING RING 6 | | | |
| 42 | CN33910 | TRIGGER VALVE CAP | 101 | CN38161 | PLANE WASHER 8 | | | |
| 43 | CN35115 | CONTACT LEVER | 102 | CN38164 | COMPRESSION SPRING 8164 | | | |
| 44 | CN35001 | TRIGGER | 103 | CN38163 | BASE DIAL | | | |
| 45 | FF22402 | SPRING PIN 3X16 (LIGHT LOAD) | 104 | HN12057 | NAIL POST | | | |
| 46 | KK23129 | COMPRESSION SPRING 3129 | 105 | HN12099 | TORSION SPRING 2099 | | | |
| 47 | CN35656 | LEVER | 106 | CN38168 | STRAIGHT PIN 8168 | | | |
| 48 | CN38343 | ARM GUIDE PIN | 107 | CN38307 | COMPRESSION SPRING 8307 | | | |
| 49 | HN10785 | CONTACT BUMPER | 108 | HN12098 | STRAIGHT PIN(MAGAZINE HINGE) | | | |
| 50 | CN38263 | ARM GUIDE | 109 | HN12079 | HEX SOC. CSK HD SCREW 5X8 | | | |
| 51 | KK23735 | COMPRESSION SPRING 3735 | 110 | HN12081 | COUNTERSUNK WASHER 5 | | | |
| 52 | KK23736 | COMPRESSION SPRING 3736 | 111 | HN12062 | PRESSER | | | |
| 53 | CN38313 | ADJUST DIAL | 112 | HN12063 | PRESSER NUT | | | |
| 54 | CN38277 | ADJUST SPACER | 113 | CN81320 | MAGAZINE CAP ASSY USA | | | |
| 55 | CN38099 | SWITCH SPRING | 114 | CN38346 | WARNING LABEL (USA) | | | |
| 56 | CN38265 | CONTACT ARM A | 115 | CN31083 | HOOK, DUST COVER | | | |
| 57 | CN38283 | O-RING AS568-033 | 116 | CN38270 | DUST COVER | | | |
| 58 | CN38279 | O-RING 1AP7 | 117 | EE11104 | SPRING WASHER 2-5 | | | |
| 59 | CN38245 | NOSE | 118 | HN70292 | HOOK ASSY | | | |

JUNE 2018